
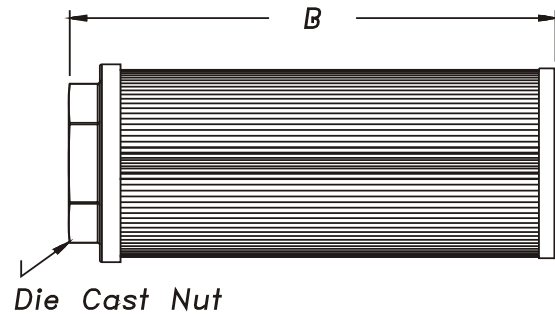
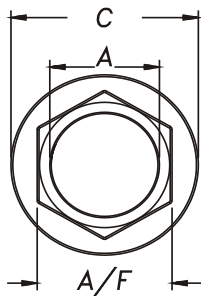



## Tank Accessories

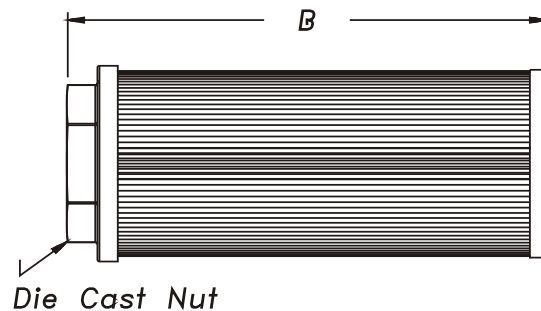
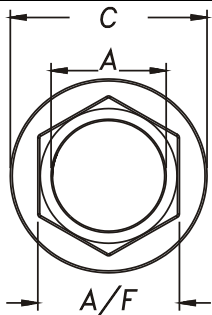
### Suction Strainer

Part Number	Size A	Micron	Flow	B	C	A/F	Picture
SS14	1/4 BSPP	149 Micron	8 lpm	90	46	24	
SS38	3/8 BSPP		12 lpm				
SS12	1/2 BSPP		20 lpm	105		30	
SS34	3/4 BSPP		28 lpm	109	64	35	
SS1	1" BSPP		40 lpm	139		46	
SS114	1-1/4 BSPP		60 lpm		86	51	
SS112	1-1/2 BSPP		80 lpm	168	86	60	
SS2	2" BSPP		160 lpm	235	100	70	
SS212	2-1/2 BSPP		300 lpm	211	150	90	
SS3	3" BSPP		400 lpm	272		100	



### Suction Strainer with Relief

Part Number	Size A	Micron	Flow	B	C	A/F	Picture
SS14B3	1/4 BSPP	149 Micron	8 lpm	90	46	24	
SS38B3	3/8 BSPP		12 lpm				
SS12B3	1/2 BSPP		20 lpm	105		30	
SS34B3	3/4 BSPP		28 lpm	109	64	35	
SS1B3	1" BSPP		40 lpm	139		46	
SS114B3	1-1/4 BSPP		60 lpm		86	51	
SS112B3	1-1/2 BSPP		80 lpm	168	86	60	

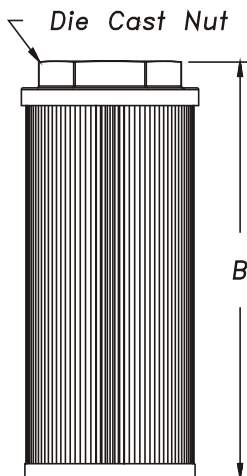
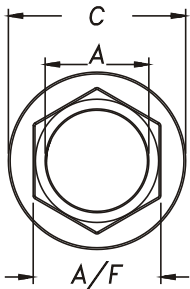


Relief 3psi

# SUCTION STRAINER - S C 3



- REUSABLE SS 100 MESH / 149 MICRON STD.
- ALUMINIUM DIE CAST NUT
- STEEL CAP / SUPPORT TUBE
- CONTINUOUS EPOXY BOND
- MAX. WORKING TEMP. 80° C.
- SUITABLE FOR HYDRAULIC / MINERAL OIL
- FLEXIBLE MAGNETIC WRAP AVAILABLE



MODEL NO	FLOW LPM	THREAD SIZE A	THREAD CODE	OVERALL LENGTH B	DIA NUT C	NUT A/F	SCREEN AREA (SQ. CMS)	WT KGS	MAGNET WRAP
SC3 - 002	8	1/4	02	90	46	24	187	0.10	2
SC3 - 003	12	3/8	03	90	46	24	187	0.10	2
SC3 - 005	20	1/2	04	105	46	30	226	0.10	2
SC3 - 007	28	3/4	06	109	64	35	406	0.20	2
SC3 - 010	40	1	08	139	64	46	542	0.20	2
SC3 - 015	60	1 - 1/4	10	139	86	51	929	0.30	2
SC3 - 020	80	1 - 1/2	12	168	86	60	1161	0.35	2
SC3 - 030	120	1 - 1/2	12	200	86	60	1393	0.40	2
SC3 - 040	160	2	16	235	100	70	1806	0.55	2
SC3 - 050	200	2	16	260	100	70	2032	0.60	2
SC3 - 075	300	2 - 1/2	20	211	150	90	2787	0.85	3
SC3 - 100	400	3	24	272	150	100	3677	1.00	3
SC3 - 150	600	3	24	345	150	100	4838	1.25	3

## MODEL CODE : ASSEMBLY

SC3	-010	-**	-**	-**	-**	-**
SERIES	SIZE	PORT THDS. SIZE	PORT THDS. CONNECTION	MICRONS. OPTIONAL #	FEATURE. SPECIAL 1	FEATURE. SPECIAL 2
		REFER TABLE OMIT IF STD	<b>B-BSPP</b> - STD <b>N-NPT</b> - OPTIONAL	<b>149</b> - SS 100 MESH STD <b>125</b> - SS 120 MESH <b>100</b> - SS 150 MESH <b>074</b> - SS 200 MESH <b>063</b> - SS 250 MESH Also - 30 / 60 MESH	<b>R B 3</b> - 3 PSI ByPass Optional	<b>M</b> - Magnet Wrap Optional

OMIT IF STANDARAD

CONSULT FACTORY, FOR OPTIONAL / SPECIAL FEATURE