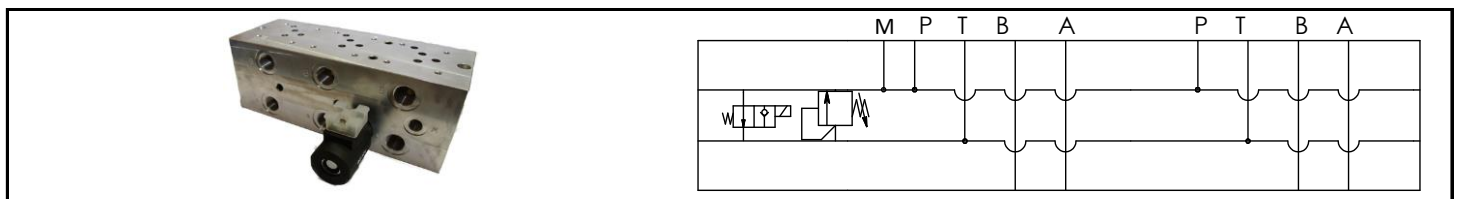


## Cetop 5 Manifolds

### Manifolds, Parallel

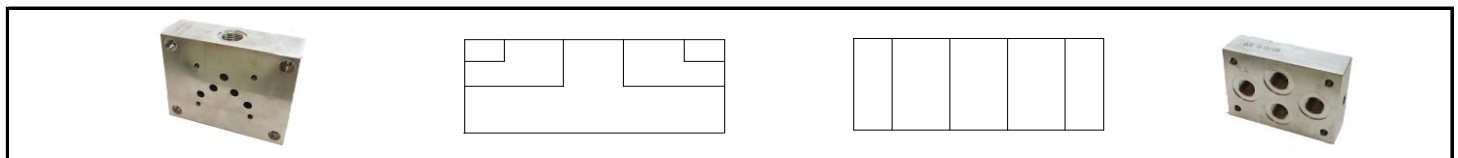
Part Number	Stations	Relief	Unload	Material
BPT5A	P & T Only	See Below to Add to Manifold	N/A	Aluminium
BS5C2	1			
BM52	2			
BM53	3			
BM54	4			
BM55	5			
BM56	6			
HLUVNG10-20-30	1 Hi-Lo	100-350 Bar	20-260 Bar	

RVP10HF	30-250 Bar Relief Valve - (Max 80lpm)
SVP10N0	Normally Open Unloading Valve - (Max 40lpm)
D1D12-10	12 VDC Solenoid, DIN Plug
D1D24-10	24 VDC Solenoid, DIN Plug
D1A220-10	240 VAC Solenoid, DIN Plug
CPT03	10-2 Cavity Plug (Relief & Unload Cavity)



### Subplates

Part Number	Stations	Function	Ports	Material
BS51A	1	Side Ports	1/2 BSPP	Aluminium
BS52A	1	Rear Ports		



### Cover Plates

Part Number	Description	Material
BS5BPA	Cetop 5 Blanking Plate	Aluminium
BS5XOA	Cetop 5 Cross Over Plate, P-B, T-A	

