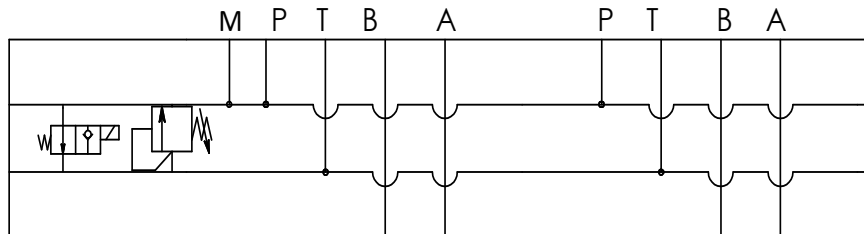


Cetop 3 Manifolds

Manifolds, Parallel

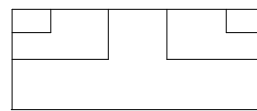
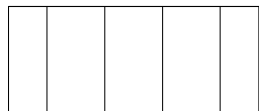
Part Number	Stations	Relief	Unload	Material
BPT3A	P&T Block Only	See below to add to Manifold	N/A	Aluminium
BS3C2	1			
BM32	2			
BM33	3			
BM34	4			
BM35	5			
BM36	6		Add Valve and Solenoid. See below	
HLUVNG6-20-30	1 Hi-Lo	100-350 Bar	20-260 Bar	

RVP08HF	130-300 Bar Relief Valve (Max 40 lpm)
VMD-C1	10-40 Bar Relief Valve (Max 20 lpm)
VMD-C2	20-110 Bar Relief Valve (Max 20 lpm)
SVP08N0	Normally Open Unloading Valve (Max 20 lpm)
D1D12-08	12 VDC Solenoid, DIN Plug
D1D24-08	24 VDC Solenoid, DIN Plug
D1A220-08	240 VAC Solenoid, DIN Plug
CPT01	08-2 Cavity Plug (Relief & Unload Cavity)



Subplates

Part Number	Stations	Function	Ports	Material
BS31A	1	Side Ports	3/8 BSPP	Aluminium
BS32A	1	Rear Ports		



Cover Plates

Part Number	Description	Material
BS3BPA	Cetop 3 Blanking Plate	Aluminium
BS3XOA	Cetop 3 Cross Over Plate, P-B, T-A	