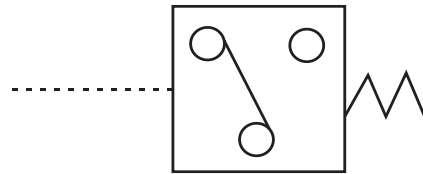


## Electrical Accessories

# New Product!

### Pressure Switches

Part Number	Range	Thread	Operating Pressure	Volt
LPS7.5HS	30-75 Bar	1/4 BSPP Male	5 - 315 Bar	Max 240V
LPS21HS	75-210 Bar			
LPS35HS	170-350 Bar			



### DIN Plugs

Part Number	DIN Size	Terminals	Body	LED
DP-LED-DC	ISO4400	3	Transparent	White
DP-LED-AC				Red
DP-RECT			Black	None



LED

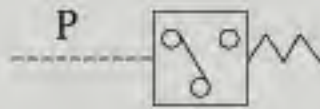


RECTIFIED

## LPS型压力继电器

### LPS-01 PRESSURE SWITCH

#### 符号 SYMBOL



LPS型柱塞式压力继电器，采用微动开关发讯，用于控制带电器的液压元件通断，使执行机构工作或停止。该型号压力继电器电器压力控制范围大、操作方便、安装简单。

LPS-01 series piston pressure switches are adopted micro-switch to control the start or stop of hydraulic components, it has characteristic of large pressure control range ,easy operation and installation.

#### 技术参数 Technical data

型号 Model	LPS
工作压力(Mpa) Operating Pressure(Mpa)	0.5-31.5
连接螺纹 Connection threaded	Z1/4
最高使用电压(V) Max.operating pressure(V)	240
开关频率(次/分) Switching frequency(Time/min)	至300 / To 300
重量(千克) Weight(KGS)	0.8
油液清洁度/Oil cleanliness	NAS1638 9级和ISO4406 20/18/15级 NAS1638 class 9 and ISO4406 class 20/18/15

LPS | 5 | HS

管式压力继电器  
Pipeline pressure switch  
压力等级 Pressure Range  
5=1~5MPa 7.5=3~7.5MPa  
21=14~21MPa 35=17~35MPa

Design No 设计号